



ROCHESTER



Your Education. Your **Choice.**

Meliora!



Always Better

At the University of Rochester, knowledge is about self-definition. At the core of Rochester's innovation is the student-centered Rochester Curriculum. Through this unusual approach, required courses are eliminated, allowing individual interests to lead your academic investigation. In other words, as a Rochester student, you'll study what you love, not spending even one day of your college career fulfilling someone else's concept of education.

In the classroom, the community, and the world, Rochester students are committed to our motto, *Meliora*. Latin for "always better," this single word has defined the University for over 150 years, a mark of our determination to keep pushing forward, breaking new ground, and exploring new territory.





The Curriculum . . . a Closer Look

Under the Rochester Curriculum, as an entering student, you'll meet one-on-one with faculty advisors during Orientation. This is the beginning of your custom-made, four-year plan of study. The *only* course required of you is one of 70 different kinds of writing. You'll end up taking at least 30-plus other courses from among thousands of choices. Graduation will include your major—one of 75 from either humanities, social sciences, or sciences, or something of your own design. You'll also take a "cluster" of three related courses from each of the other two branches of learning. An enormous percentage of Rochester students complete unusual double majors, and all complete minors, languages, study abroad, private music lessons, professional certificates, internships, and/or individualized research within their four years.



Options

Undergraduate Research/Quest courses: From the first year of study, undergraduates have the opportunity to engage in collaborative research with professors and peers.

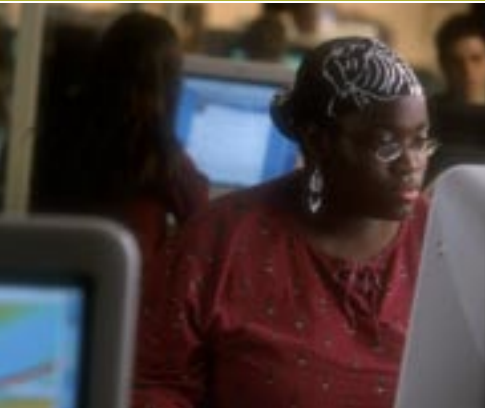
Take Five: A tuition-free additional semester or year of academic study outside of the degree major.

Guaranteed Graduate or Double Admission: For exceptional high school seniors, Rochester offers combined admission to most College programs and our professional schools of medicine, music, business, and education. For the combined

eight-year B.A./B.S.-M.D. program, more than 800 students apply each year for one of 10 spaces.

Senior Scholars: Immersion opportunities to spend your entire senior year working on a project that will draw on your college experience. This project could be a scientific investigation, a research endeavor, or a work of art.

Undergraduate Research: No university in the world does it better. Rochester's intimate scale allows the research faculty and students to know each other from the beginning. More than 90 percent of Rochester undergraduates join or conduct their own research, and a phenomenal 60 percent enter graduate programs themselves.



Campus Life, Good Life

- The student body represents the entire United States and more than 90 nations.
- A quarter of the students represent American minority populations, and more than 1 in 10 are from historically underrepresented communities.
- There are more than 200 student-run organizations, ranging from the Brain and Cognitive Sciences Council to the Smash Videgamers Club.
- Ninety-nine percent of freshmen and sophomores, 90 percent of juniors, and 65 percent of Rochester seniors live on campus.
- A powerful Rochester tradition is giving back to the community. More than 70 percent of Rochester students volunteer for community service projects throughout the year.



Live and Learn

The University of Rochester's main campus, the River Campus, is 85 acres of big trees and wide lawns along a bend in the Genesee River. Walking from any place on campus to any other place—including across the street to one of the world's greatest medical centers—is easy.

The world-famous Eastman School of Music Campus and Rochester's Memorial Art Gallery are just two miles downriver—a free 10-minute bus ride downtown.

Most undergraduates live in University housing. Besides convenience to classes, renovated halls, and superior connectivity (voice, video, and data), on-campus living gives you the opportunity to be part of a community of friends and fellow students. All classrooms, libraries, and labs offer wireless Internet access. All residence hall rooms are equipped with broadband connections to the University-wide data communications network.



Play's the Thing

Rochester keeps in shape. For everything from varsity athletics to personal fitness, we've got all the facilities and opportunities you could expect at a much bigger university. The Robert B. Goergen Athletic Center features the Edmund A. Hajim Alumni Gymnasium, an 11,000-square-foot fitness center with state-of-the-art equipment, locker rooms, and a multi-activity center. The Center is also home to an extensive sports and recreation program.



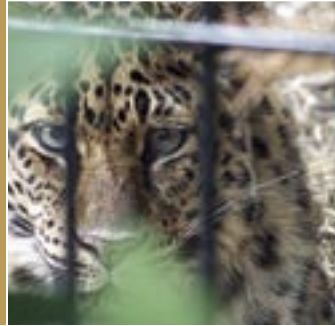
Varsity Sports

Rochester's varsity teams compete in two NCAA Division III athletic conferences. There are 22 different sports for men (M) and women (W):

- Baseball (M)
- Basketball (MW)
- Cross-Country (MW)
- Field Hockey (W)
- Football (M)
- Golf (M)
- Lacrosse (W)
- Soccer (MW)
- Softball (W)
- Squash (M)
- Swimming and Diving (MW)
- Tennis (MW)
- Indoor Track and Field (MW)
- Outdoor Track and Field (MW)
- Volleyball (W)

Living in Rochester

With just over a million people living in the metropolitan area, Rochester has the entertainment and culture of a big city but the friendliness (and lack of traffic) of a small town. World-renowned jazz and film festivals, professional sports teams, independent theaters, museums, parks, and one-of-a-kind restaurants and boutiques are all a part of what makes Rochester unique.



Getting Here

Admission is competitive. Twelve students apply to the University of Rochester for every available position in the freshman class. We evaluate applicants one at a time, considering several factors:

Balance. Every enrolling student brings a combination of individual interests and passions. Our students do what they like because they like it, not to please someone else's definition of "well-rounded."

Excellence. We admire evidence of academic accomplishments, independent motivation, and personal character.

Diversity. A variety of viewpoints deepens our residential campus experience, so we seek students from many backgrounds and lifestyles. For example, we may consider cultural identity, distinctive achievements, and a variety of geographic and socioeconomic perspectives.

A recent entering class included a stilt-walker, a winner of the Massachusetts

Duck Stamp Award, a Native American filmmaker, a Brazilian soccer player, a dolphin trainer, and a Supreme Court intern.

The University of Rochester welcomes students with physical disabilities and learning differences.

For complete admissions information and downloadable forms, please visit www.enrollment.rochester.edu/admissions.

Like any world-class educational institution, the University of Rochester requires a significant financial investment, and we are committed to providing a sound program of merit- and need-based financial assistance. Nearly 8 of every 10 University of Rochester students receive financial aid, including scholarships, grants, loans, work study, outside awards, etc. Aid packages can range from low-interest loans and work opportunities to having your entire tuition covered through grant assistance. For more information about need-based financial assistance, visit www.enrollment.rochester.edu/financial.

Cost of Attendance for 2006–2007

Tuition and Fees (USD): \$33,426

Room and Board: \$10,192

Other: \$2,205

Grand Total: \$45,823

Percent receiving need-based aid: 68%

Percent receiving all forms of aid: 75%

Visit Us . . .

You have to see it and feel it to understand what's unique about the University of Rochester. A campus visit is essential. Talk to students and faculty, sit in on classes, look around, and see if it clicks. To arrange a campus visit, tour, and interview—and for complete driving directions to campus—go to www.enrollment.rochester.edu/admissions/visit.



Application Documents

To apply for admission, Rochester requires the Common Application, Rochester's Common Application Supplement, and any supporting materials. To access these application materials, visit www.enrollment.rochester.edu/admissions/apply. For Common Application materials, visit www.commonapp.org. Rochester also requires a secondary school report with recommendation(s) and a transcript showing commitment and achievement.

Scholarships

University scholarships include Frederick Douglass and Susan B. Anthony Scholarships for social justice, 7th Generation Awards for environmental activism, Youth Orchestra scholarships, and 10 full-tuition Renaissance awards. For a comprehensive look at scholarships at the University of Rochester, visit www.enrollment.rochester.edu/admissions/financial/merit.shtml.

How to Apply to Rochester . . .

To apply for admission, the University of Rochester requires the Common Application, the Common Application Supplement, and any supporting materials. To access these forms, visit www.enrollment.rochester.edu/admissions/apply.

Application Timetable

| | |
|---|-------------------|
| Early Decision (ED) Application Deadline (<i>ED is binding</i>) | November 1 |
| ED Financial Aid application deadline (CSS PROFILE and FAFSA) | November 15 |
| <i>ED applicants have equal access to financial aid and scholarships</i> | |
| Applications to the Eastman School of Music | December 1 |
| Applications to the Rochester Early Medical Scholars Program (REMS) . . | December 1 |
| Applications to the Rochester Early Business Scholars Program (REBS) . . | December 1 |
| Applications to the Guaranteed Rochester Accelerated Degree in Education (GRADE), and some scholarships | December 1 |
| Early Decision Notification | December 15 |
| Early Decision Reply Date | January 15 |
| Application deadline | January 15 |
| Financial Aid application deadline (CSS PROFILE and FAFSA) | February 1 |
| Decision Notification | April 1 |
| Reply Date . ☒ | May 1 |

Admitted Students' Statistics

In 2006, 11,314 applied/1,102 enrolled
(includes Early Decision)
SAT-V (mid-50 percent range): 620–720
SAT-M (mid-50 percent range): 640–740
ACT (mid-50 percent range): 28–32
Top decile of their class: 77%
Top quartile of their class: 96%

Enrolled students come from all states and most countries: 39 percent are from New York State. Rochester has 4,599 full-time undergraduates and 2,397 full-time graduate students. The ratio of men to women is 53/47 percent.

Contact Us

Office of Admissions

P.O. Box 270251
Rochester, NY 14627-0251
admit@admissions.rochester.edu
www.enrollment.rochester.edu/admissions
(585) 275-3221
(888) 881-8234

Financial Aid Office

P.O. Box 270261
Rochester, NY 14627-0261
help@finaid.rochester.edu
www.rochester.edu/financialaid
(585) 275-3226 or
(800) 881-8234

Dean of Admissions and Financial Aid

Jonathan R. Burdick

Director of Financial Aid

Charles Wilder Puls

Other helpful offices include:

Eastman School of Music

(585) 274-1060

Athletics

(585) 275-4301

Learning Disabilities

(585) 275-4085

Counseling Staff

Dan Abbott
Chris Antal
Amanda Carter
Kim Crosby
Mark Emblidge
Emily Cihon Fehnel
Cortney Harris
Jon Heiningner
Corey Hill
Isaac Ingersoll
Sara Korol
Joseph Lanning
Joseph Latimer
Jacqueline Martinez
Andre McKenzie
Dana Mittelman
Andrea Mravlja
Hysha Robinson
Costas Solomou
Greg Sperr
Davin Sweeney
Michelle Thompson-Taylor
Yvonne Tolliver
Pat Toporzycki
Brendon Troy
Maria Vega
David Weiner
Mark Wells
Stacy Wells

Areas of Study

The College: Arts and Sciences

Actuarial Studies
African and African-American Studies
American Sign Language
Anthropology
Applied Economics
Applied Mathematics
Arabic
Art History
Asian Studies
Astronomy
Biochemistry
Biology
Biotechnology
Brain and Cognitive Sciences
Cell and Developmental Biology
Chemistry
Chinese
Classical Civilization
Classics
Clinical Psychology
Comparative Literature
Comparative Literature and Theory
Computer Science
Developmental Psychology
Ecology and Evolutionary Biology
Economics
English
English Literature
Environmental Geology
Environmental Science

Environmental Studies
Ethics
Film and Media Studies
Financial Economics
French
Gender Psychology
Geological Sciences
Geomechanics
German
Greek
Health and Society
Health Psychology
History
History of Philosophy
Interdepartmental Studies
International Relations
Italian
Japanese
Latin
Latin-American Studies
Legal Studies
Linguistics
Management Studies
Marine Geology and Ecology
Mathematical Modeling in Political
Science and Economics
Mathematics
Mathematics-Statistics
Medical Anthropology
Microbiology

Modern Languages and Culture
Molecular Genetics
Music
Neuroscience
Organizational Psychology
Paleontology and Evolution
Philosophy
Philosophy of Science
Physics
Physics and Astronomy
Polish and Central European Studies
Political Science
Psychology
Psychology as a Natural Science
Psychology as a Social Science
Religion
Russian
Russian Studies
Social and Emotional Development
Social-Personality Psychology
Spanish
Statistics
Studio Arts
Theater
Visual and Cultural Studies
Visual Science
Women's Studies
Writing (Creative Writing or Journalism)

The College: School of Engineering and Applied Sciences

Biomedical Engineering
Chemical Engineering
Electrical and Computer Engineering
Engineering and Applied Sciences, an
Interdepartmental Program
Engineering Science
Geomechanics
Materials Science
Mechanical Engineering
Optical Engineering and Science

Eastman School of Music

Applied Music (instruments and voice)
Conducting
Early Music, Emphasis in Historical
Plucked Instruments
Ethnomusicology
Jazz Studies and Contemporary Media
Music Composition
Music Education
Music Theory
Musical Arts
Musicology
Opera
Pedagogy of Music Theory
Performance and Literature
Piano Accompanying and Chamber
Music

Double Degree

Eastman School of Music B.M. students may pursue a simultaneous second degree in the College. These include the Bachelor of Arts (B.A.), Bachelor of Science (B.S.), or various degrees in engineering.

3+2 and Early Admission Programs

B.A. and B.S. in an Engineering concentration (for transfer students)
B.A. or B.S. plus an M.B.A. (3+2 or 4+2)
B.A. or B.S. plus an M.A. in Public Health
B.A. or B.S. plus an M.S. in Human Development
B.A. in Music plus an M.A. in Music Education
B.S. and M.S. in Biological Sciences/Neuroscience
B.S. and M.S. in Biomedical Engineering
B.S. and M.S. in Chemical Engineering
B.S. and M.S. in Electrical and Computer Engineering
B.S. and M.S. in Mechanical Engineering
B.S. and M.S. in Optics
B.A. or B.S. plus M.D. or M.D./Ph.D. (4+4)
B.A. or B.S. plus M.S.Ed (4+1)
B.S. in Nursing (4+1)

The University of Rochester is an equal opportunity institution.